

Vibrostop TSPP

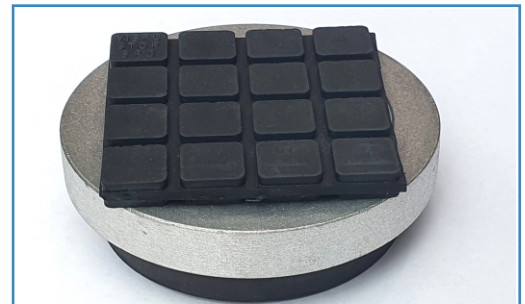
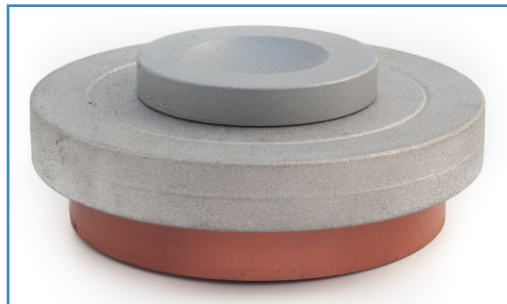
Versione standard
Standard version



Speciale (SA) Sede Acciaio
Special (SA) Seel Seat

Speciale (TSPP + BPD)
Special (TSPP + BPD)

OPZIONI
Options



CARATTERISTICHE
Features

- Possibilità di carico da 50 daN a 1500 daN per antivibrante.
- Ingombro in altezza ridotto.
- Cappuccio in alluminio a protezione dell'elastomero.

- Loading up between 50 daN and 1500 daN each A.V. Mountings.
- Low height.
- Aluminium cap to shelter the elastomer.

MATERIALI
Materials

- Componenti in gomma: elastomero Vibrostop.
- Componenti in metallo: lega di alluminio.

- Rubber components: Vibrostop elastomer.
- Metal components: aluminium alloy.

APPLICAZIONI
Applications

- Presse - Magli - Cesoie - Macchine utensili - Torri evaporative - Gruppi di condizionamento - Pavimenti flottanti - Pianoforti.

- Presses - Hammers - Shears - Machine tool - Cooling towers - Air conditioning units - Floating floor - Pianos.

INSTALLAZIONE
Installation

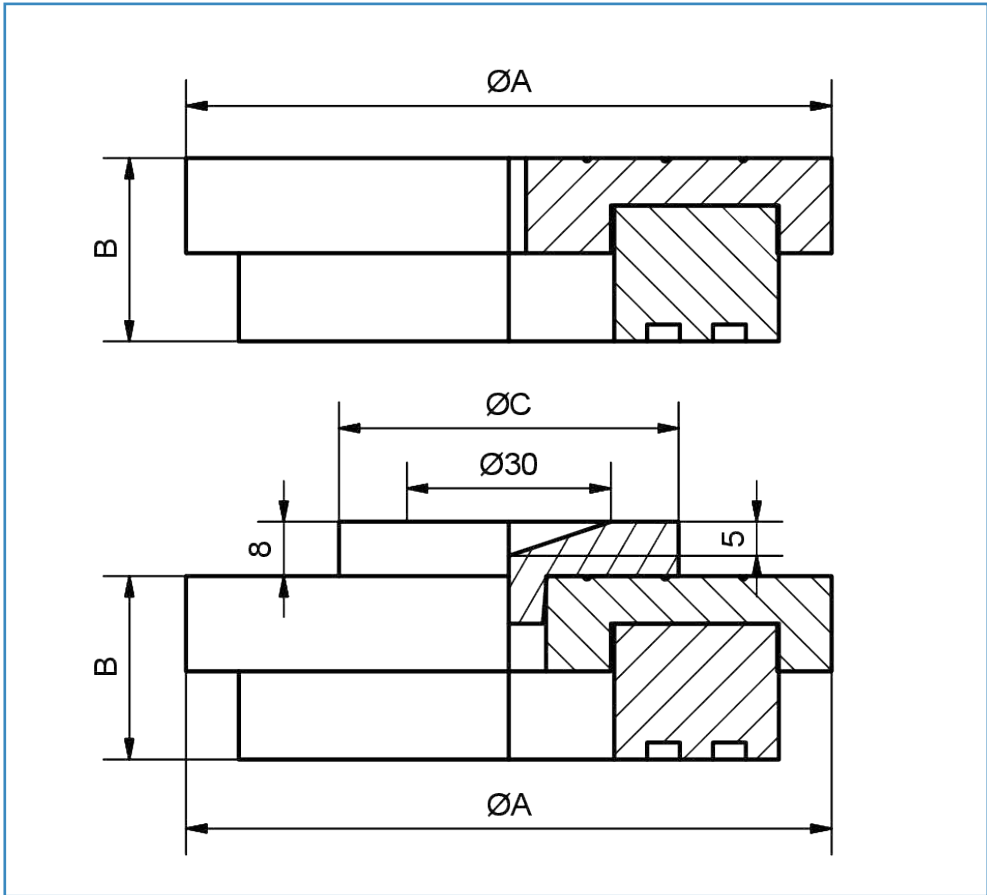
- Appoggio oppure fissaggio (opzionale) tra macchina e antivibrante.
- Semplice appoggio a pavimento.

- Leaning or fixing (optional) between machine and A.V. mounting.
- Simple leaning to the floor.

Versione standard
Standard version

Speciale (SA)
Sede Acciaio

Special (SA)
Seel Seat



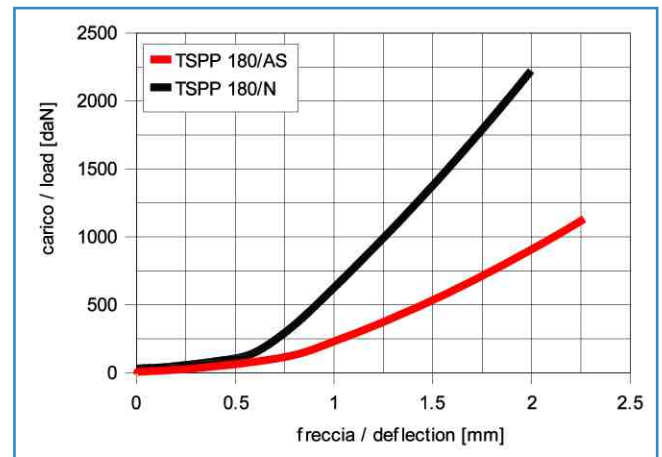
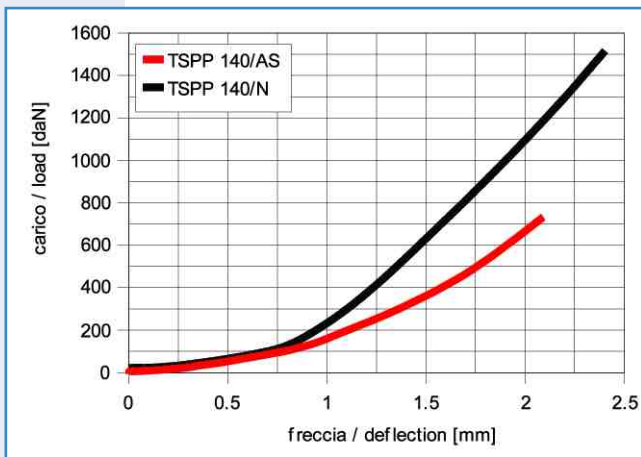
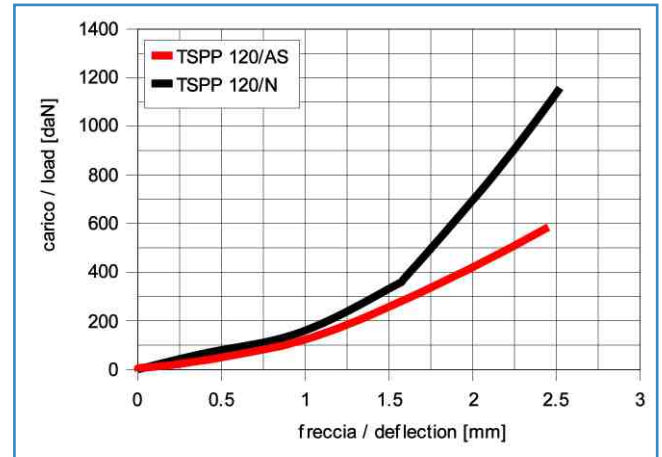
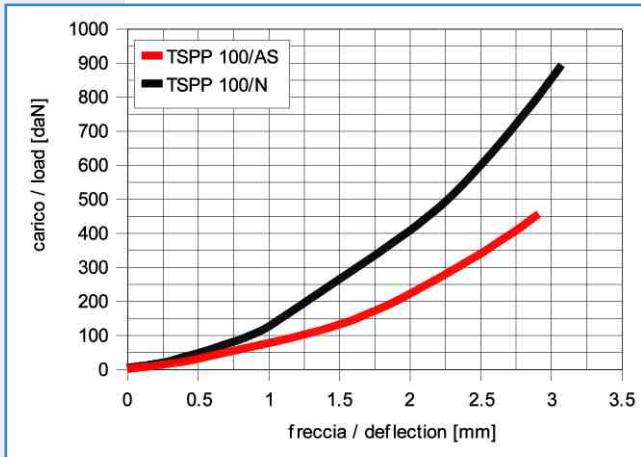
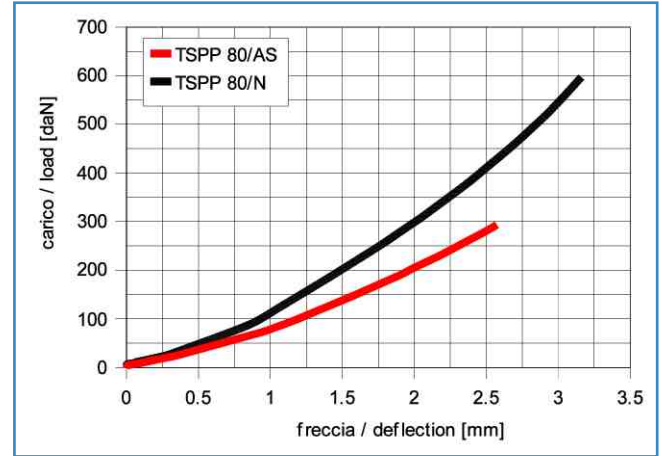
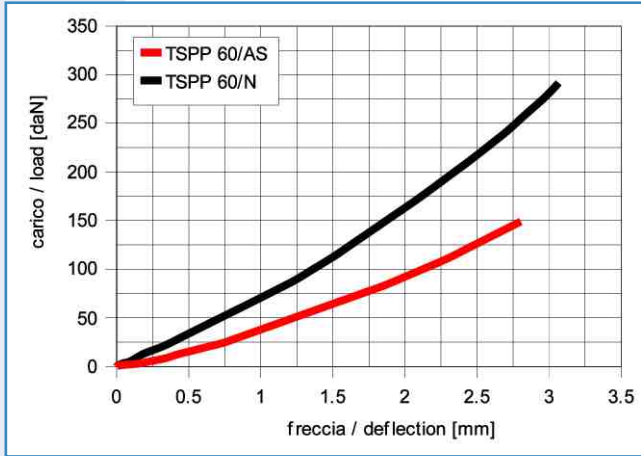
PORTATA LOAD				DIMENSIONI DIMENSIONS		
AS MESCOLA ALTA SESIBILITA' HIGH SENSITIVITY [45° Sh]		N MESCOLA NORMALE NORMAL [60° Sh]		ØA [mm]	B [mm]	ØC [mm]
TIPO Type	CARICO Load [daN]	TIPO Type	CARICO Load [daN]			
TSPP 60/AS	50 - 100	TSPP 60/N	100 - 200	70	27	50
TSPP 80/AS	100 - 200	TSPP 80/N	200 - 400	94	27	50
TSPP 100/AS	200 - 300	TSPP 100/N	400 - 600	110	27	50
TSPP 120/AS	300 - 400	TSPP 120/N	600 - 800	130	27	75
TSPP 140/AS	400 - 500	TSPP 140/N	800 - 1000	150	27	75
TSPP 180/AS	500 - 750	TSPP 180/N	1000 - 1500	200	36	75

Dimensioni indicative

Dimensions for reference only

Diagrammi di carico

Load diagrams



Curve caratteristiche indicative

Performance characteristics for reference only