

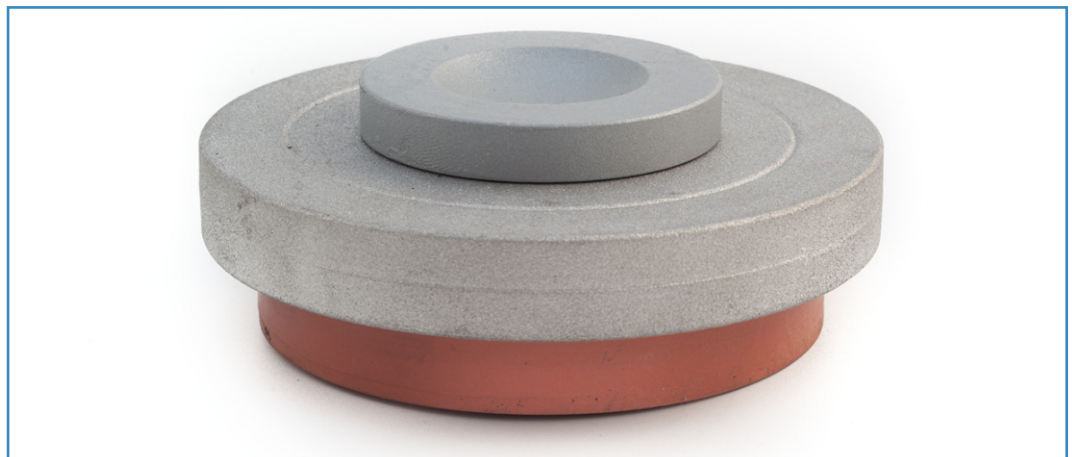
# Vibrostop TSPP

Versione standard  
Standard version



Speciale (SA)  
Sede Acciaio

Special (SA)  
Seel Seat



## CARATTERISTICHE Features

- Possibilità di carico da 50 daN a 1500 daN per antivibrante.
- Ingombro in altezza ridotto.
- Cappuccio in alluminio a protezione dell'elastomero.

- *Loading up between 50 daN and 1500 daN each A.V. Mountings.*
- *Low height.*
- *Aluminium cap to shelter the elastomer.*

## MATERIALI Materials

- Componenti in gomma: elastomero Vibrostop.
- Componenti in metallo: lega di alluminio.

- *Rubber components: Vibrostop elastomer.*
- *Metal components: aluminium alloy.*

## APPLICAZIONI Applications

- Presse - Magli - Cesioie - Macchine utensili - Torri evaporative - Gruppi di condizionamento - Pavimenti flottanti - Pianoforti.

- *Presses - Hammers - Shears - Machine tool - Cooling towers - Air conditioning units - Floating floor - Pianos.*

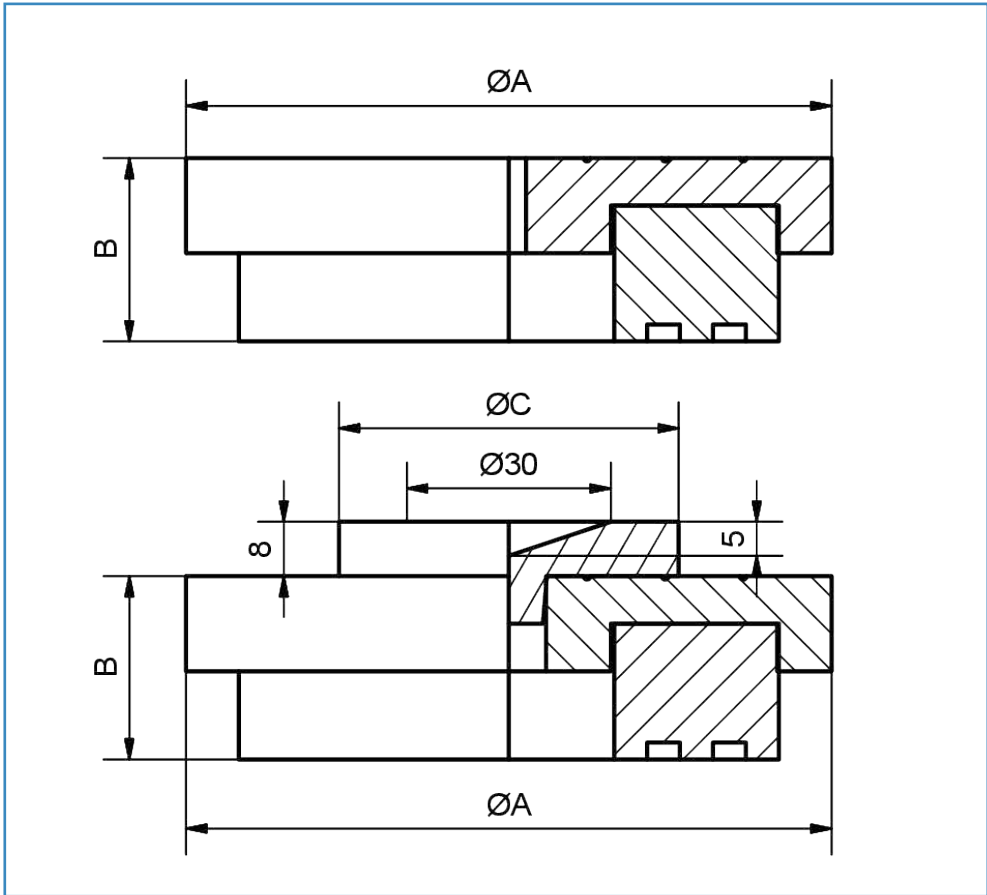
## INSTALLAZIONE Installation

- Appoggio oppure fissaggio (opzionale) tra macchina e antivibrante.
- Semplice appoggio a pavimento.

- *Leaning or fixing (optional) between machine and A.V. mounting.*
- *Simple leaning to the floor.*

**Versione standard**  
*Standard version*

**Speciale (SA)**  
*Sede Acciaio*  
  
*Special (SA)*  
*Seel Seat*



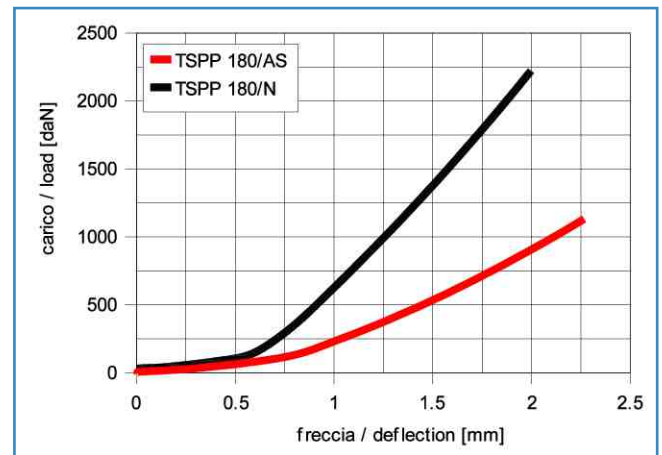
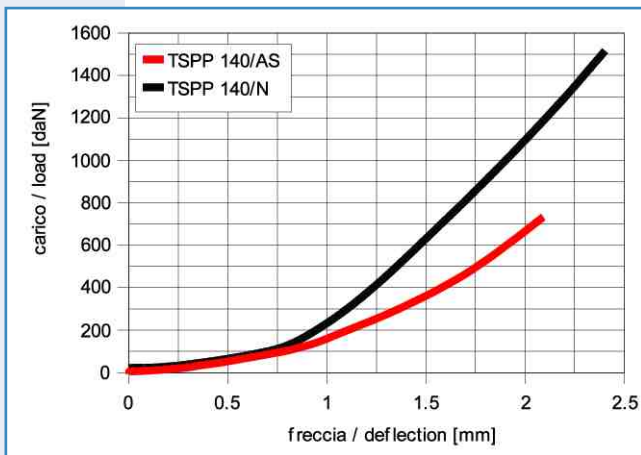
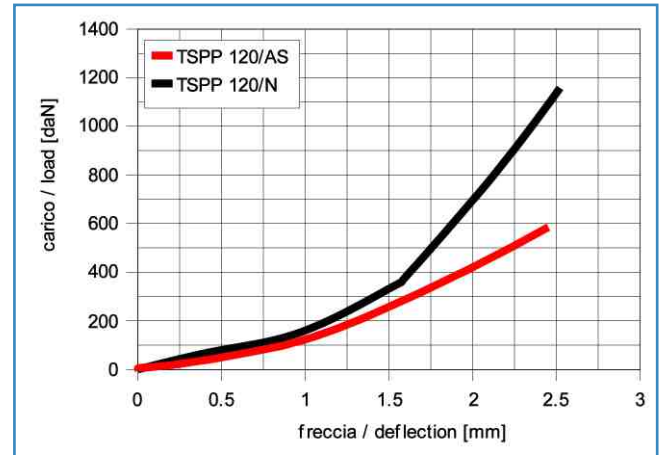
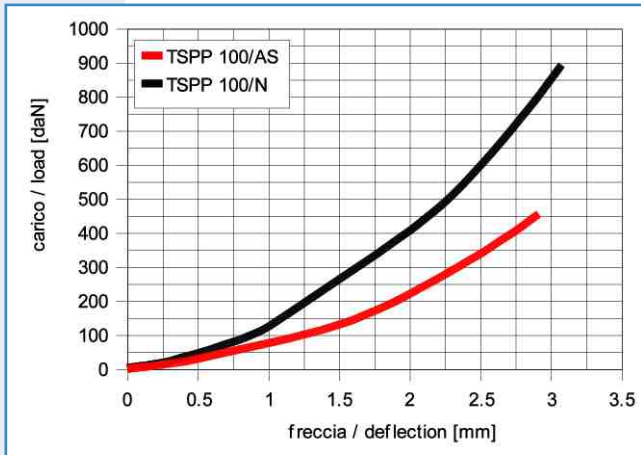
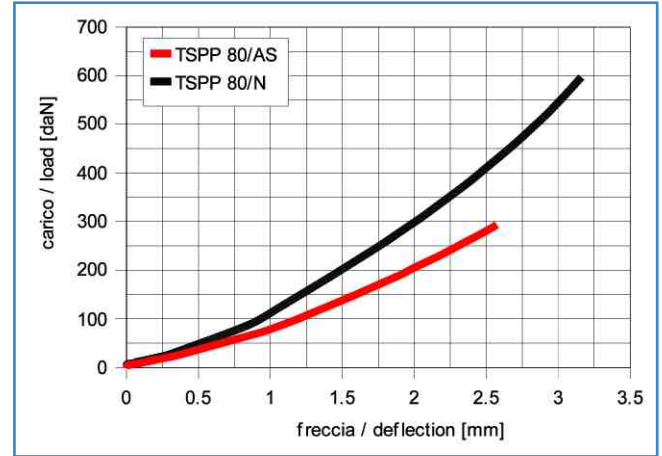
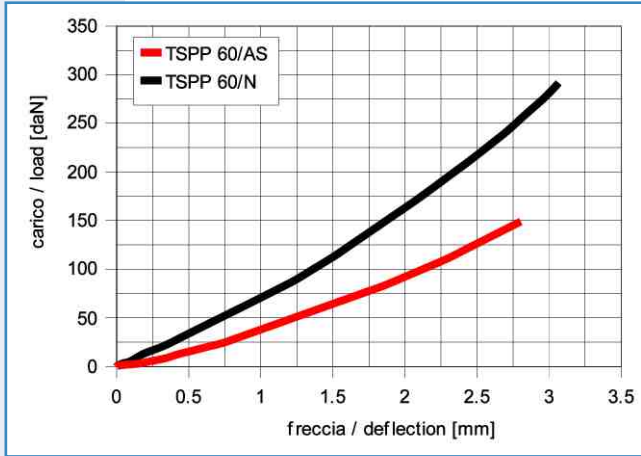
| PORTATA<br>LOAD   |                                |   |                                | DIMENSIONI<br>DIMENSIONS |           |            |
|---|--------------------------------|---|--------------------------------|--------------------------|-----------|------------|
| <b>AS</b><br>MESCOLA<br>ALTA SESIBILITA'<br><i>HIGH SENSITIVITY</i><br>[45° Sh] |                                | <b>N</b><br>MESCOLA<br>NORMALE<br><i>NORMAL</i><br>[60° Sh] |                                | ØA<br>[mm]               | B<br>[mm] | ØC<br>[mm] |
| TIPO<br><i>Type</i>   | CARICO<br><i>Load</i><br>[daN] | TIPO<br><i>Type</i>   | CARICO<br><i>Load</i><br>[daN] |                          |           |            |
| TSP 60/AS   | 50 - 100                       | TSP 60/N  | 100 - 200                      | 70                       | 27        | 50         |
| TSP 80/AS   | 100 - 200                      | TSP 80/N  | 200 - 400                      | 94                       | 27        | 50         |
| TSP 100/AS  | 200 - 300                      | TSP 100/N   | 400 - 600                      | 110                      | 27        | 50         |
| TSP 120/AS  | 300 - 400                      | TSP 120/N   | 600 - 800                      | 130                      | 27        | 75         |
| TSP 140/AS  | 400 - 500                      | TSP 140/N   | 800 - 1000                     | 150                      | 27        | 75         |
| TSP 180/AS  | 500 - 750                      | TSP 180/N   | 1000 - 1500                    | 200                      | 36        | 75         |

*Dimensioni indicative*

*Dimensions for reference only*

# Diagrammi di carico

# Load diagrams



Curve caratteristiche indicative

Performance characteristics for reference only