

Vibrostop G



CARATTERISTICHE Features

- Possibilità di carico da 250 daN a 10000 daN per antivibrante.
- Ingombro in altezza ridotto.
- Piastra in alluminio a protezione dell'elastomero.

- *Loading up between 250 daN and 10000 daN each A.V. Mountings.*
- *Low height.*
- *Aluminium plate to shelter the elastomer.*

MATERIALI Materials

- Componenti in gomma: elastomero Vibrostop.
- Componenti in metallo: lega di alluminio.

- *Rubber components: Vibrostop elastomer.*
- *Metal components: aluminium alloy.*

APPLICAZIONI Applications

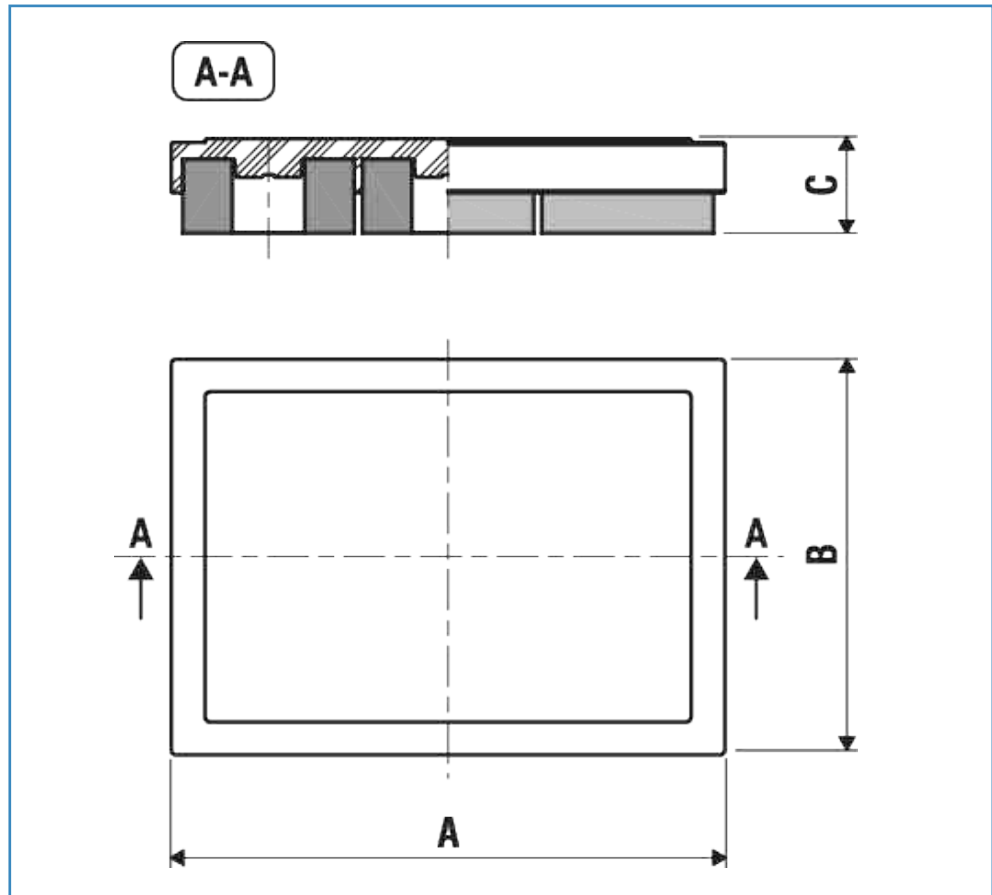
- Presse - Magli - Cesoie - Macchine utensili - Torri evaporative - Gruppi di condizionamento.

- *Presses - Hammers - Shears - Machine tool - Cooling towers - Air conditioning units.*

INSTALLAZIONE Installation

- Appoggio tra macchina e antivibrante.
- Semplice appoggio a pavimento.

- *Leaning between machine and A.V. mounting.*
- *Simple leaning to the floor.*



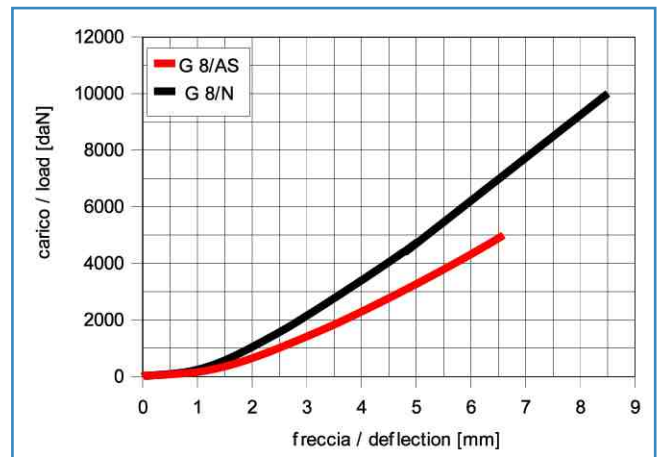
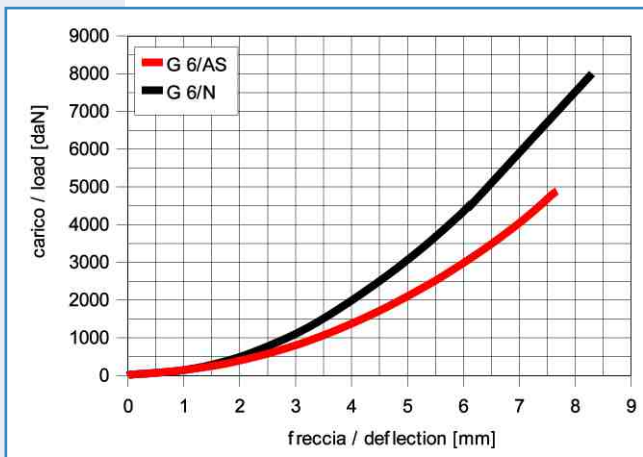
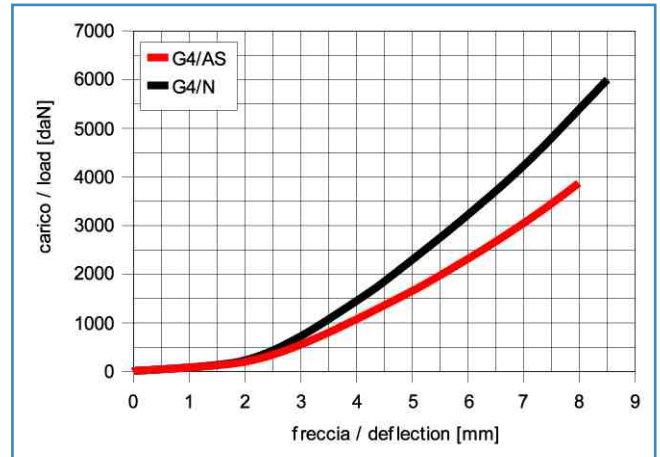
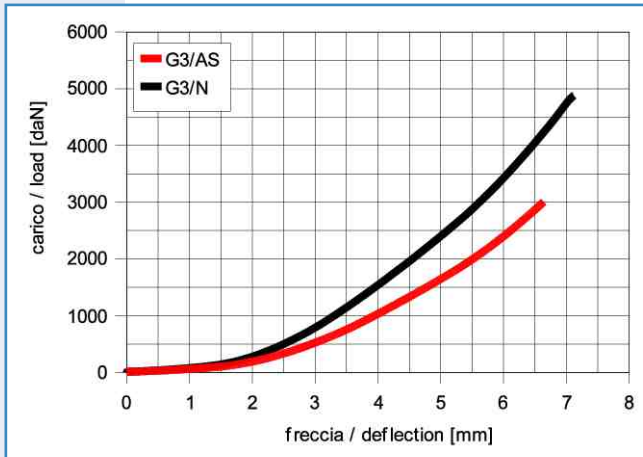
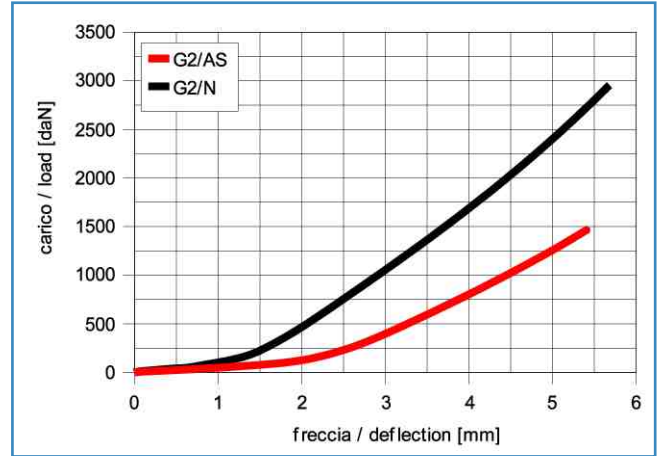
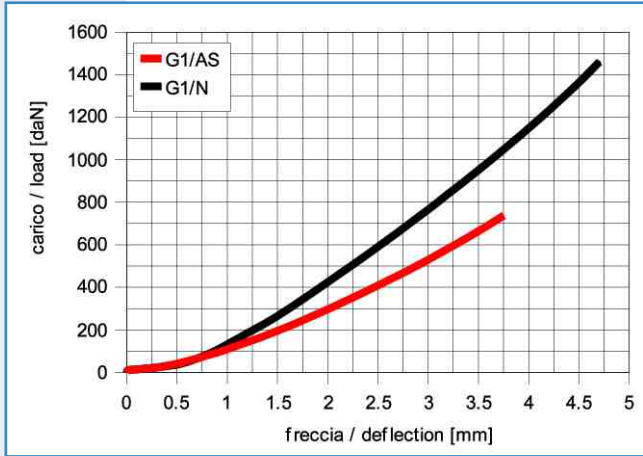
PORTATA LOAD				DIMENSIONI DIMENSIONS		
AS MESCOLA ALTA SESIBILITA' HIGH SENSITIVITY [45° Sh]		N MESCOLA NORMALE NORMAL [60° Sh]		A [mm]	B [mm]	C [mm]
TIPO Type	CARICO Load [daN]	TIPO Type	CARICO Load [daN]			
G 1/AS	250 - 500	G 1/N	500 - 1000	175	85	41
G 2/AS	500 - 1000	G 2/N	1000 - 2000	190	175	41
G 3/AS	1000 - 2000	G 3/N	2000 - 4000	245	175	41
G 4/AS	2000 - 3000	G 4/N	4000 - 6000	350	195	41
G 6/AS	3000 - 4000	G 6/N	6000 - 8000	395	265	45
G 8/AS	4000 - 5000	G 8/N	8000 - 10000	360	355	46

Dimensioni indicative

Dimensions for reference only

Diagrammi di carico

Load diagrams



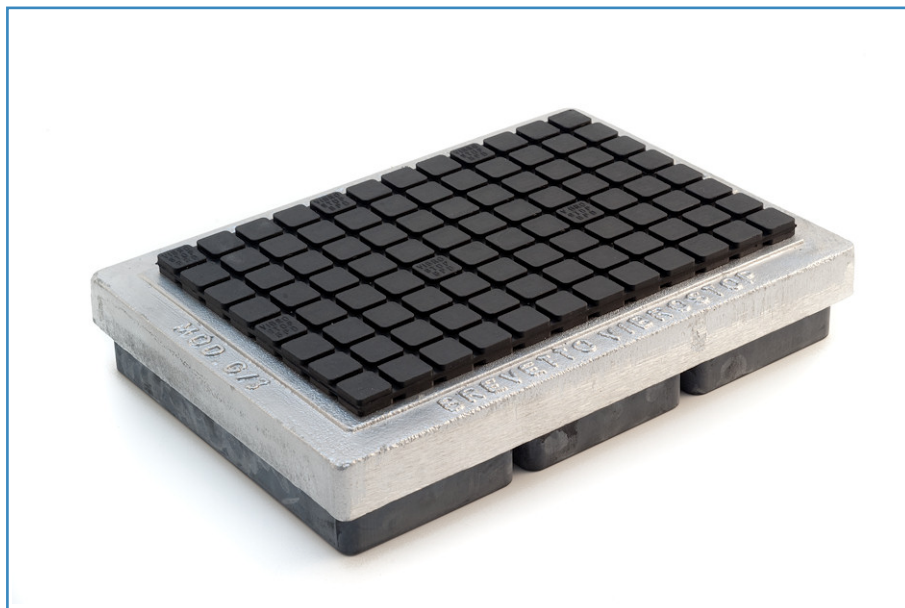
Curve caratteristiche indicative

Performance characteristics for reference only

Accessori

Accessories

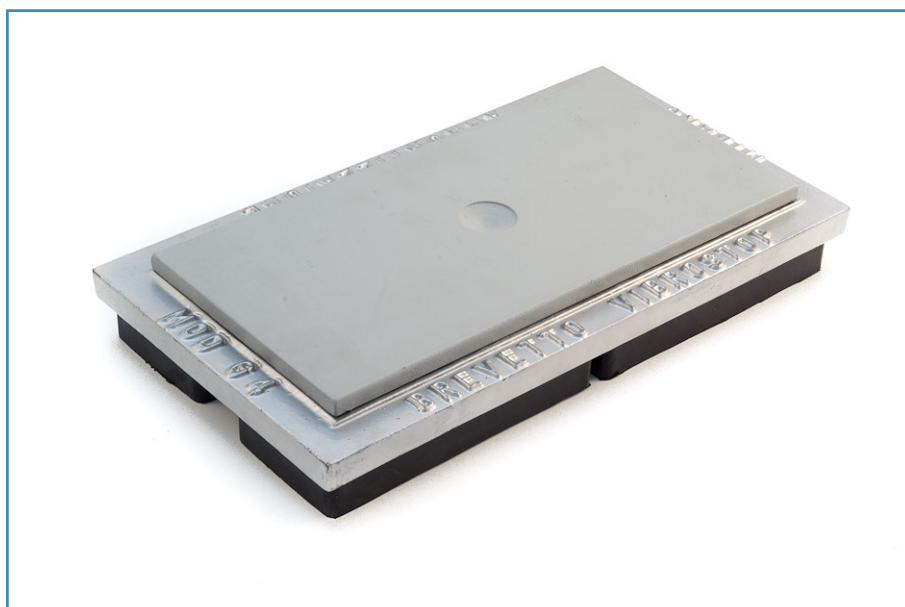
G con piastra BPD
G with BPD plate



- Piastra BPD appoggiata o incollata per evitare il contatto metallico tra antivibrante e macchina.

- *The G/BPD is covered with Vibrostop BPD plate, which can be glued, and prevents the contact between the machinery and mountings metals.*

G con piastra acciaio
G with steel plate



- Piastra in acciaio con nicchia emisferica per l'appoggio degli eventuali carichi concentrati.

- *The steel plate presents a hemispheric niche where to insert the eventual puntual loads.*

Vibrostop G/DS



CARATTERISTICHE Features

- Possibilità di carico da 250 daN a 10000 daN per antivibrante.
- Basso valore della frequenza propria.
- Piastra in alluminio a protezione dell'elastomero.

- *Loading up between 250 daN and 10000 daN each A.V. Mountings.*
- *Low natural frequency.*
- *Aluminium plate to shelter the elastomer.*

MATERIALI Materials

- Componenti in gomma: elastomero Vibrostop.
- Componenti in metallo: lega di alluminio.

- *Rubber components: Vibrostop elastomer.*
- *Metal components: aluminium alloy.*

APPLICAZIONI Applications

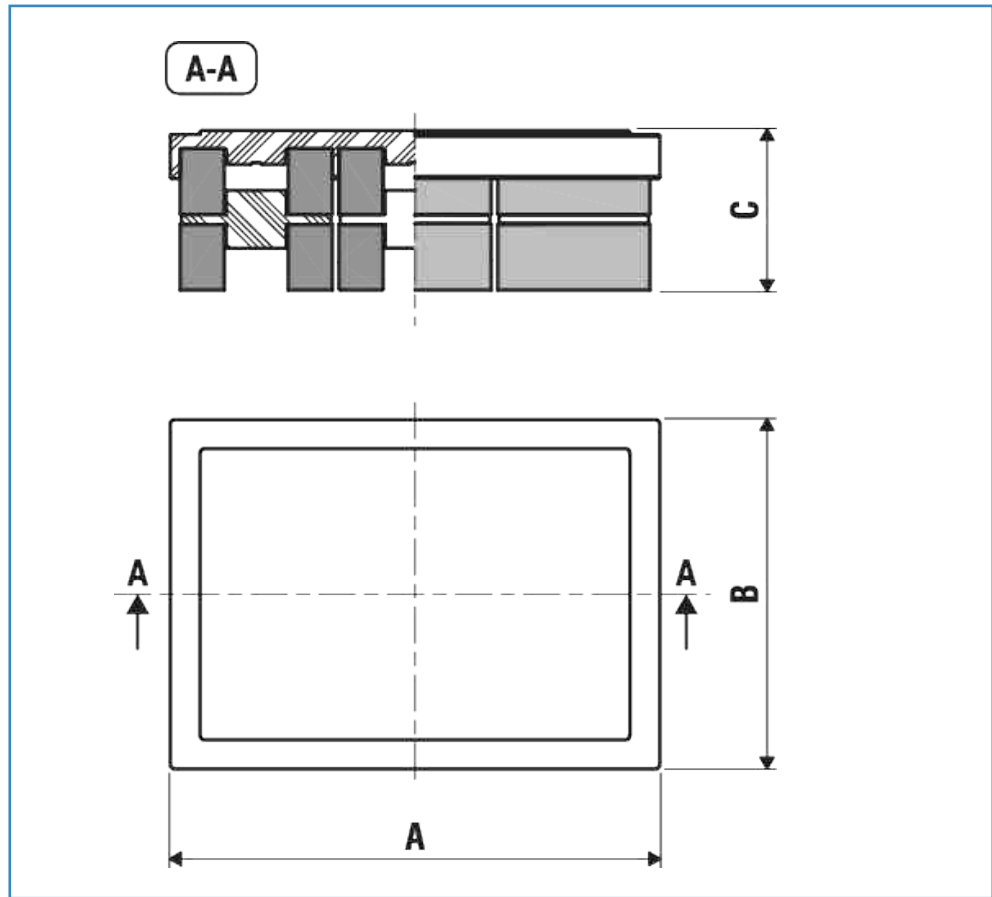
- Presse - Magli - Cesioie - Macchine utensili - Torri evaporative - Gruppi di condizionamento.

- *Presses - Hammers - Shears - Machine tool - Cooling towers - Air conditioning units.*

INSTALLAZIONE Installation

- Appoggio tra macchina e antivibrante.
- Semplice appoggio a pavimento.

- *Leaning between machine and A.V. mounting.*
- *Simple leaning to the floor.*



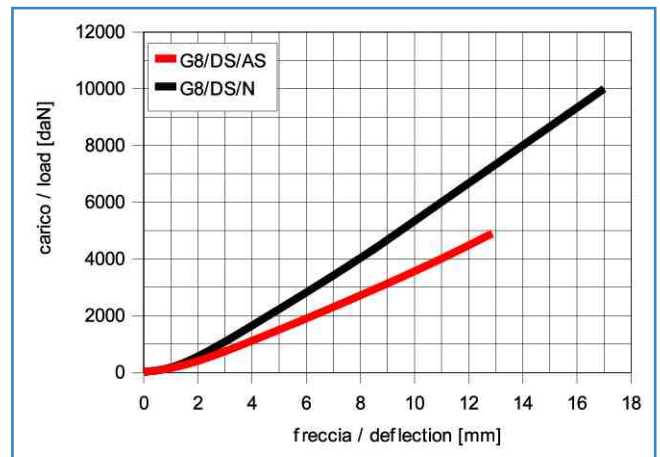
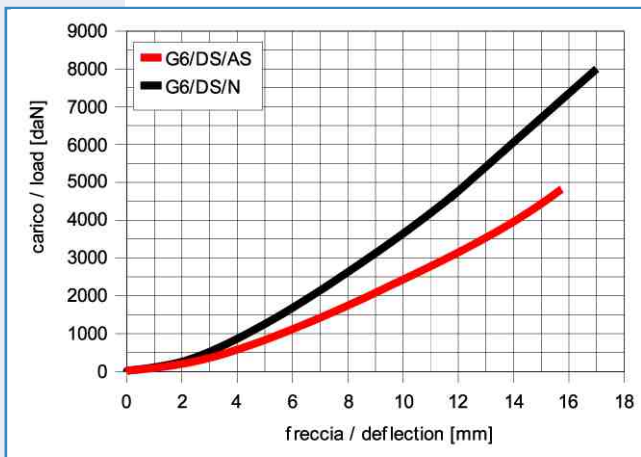
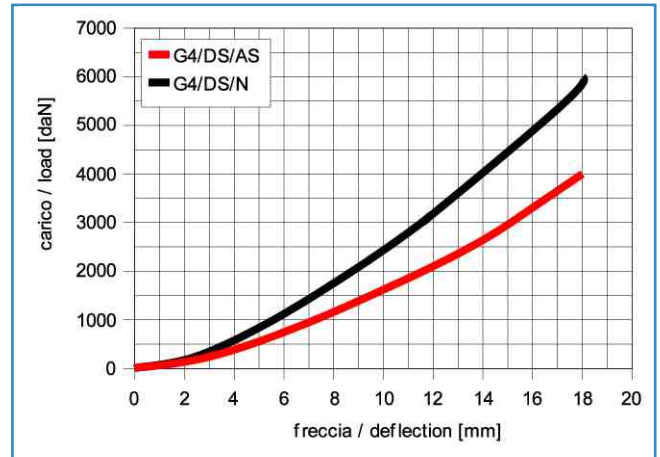
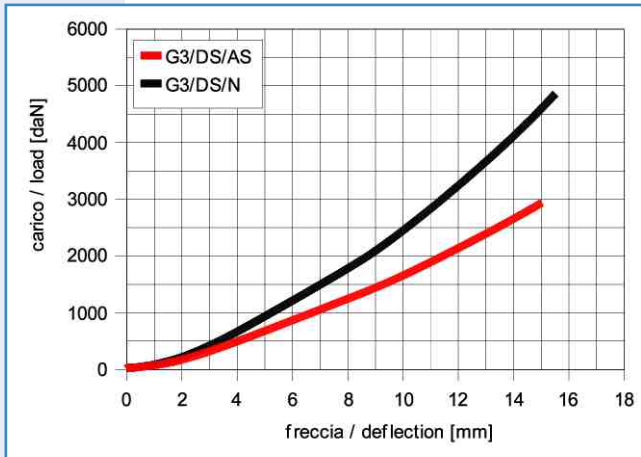
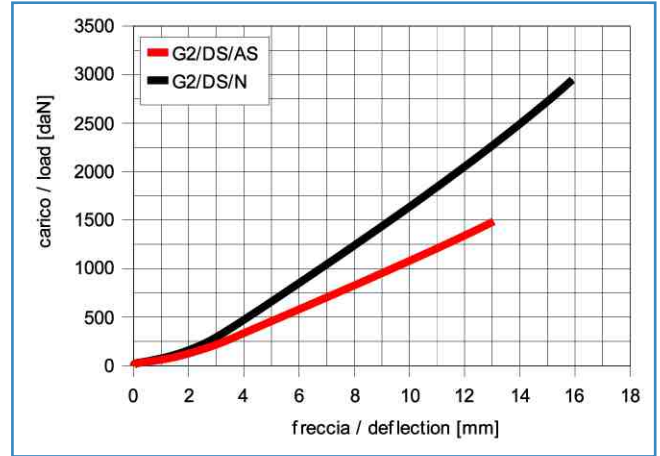
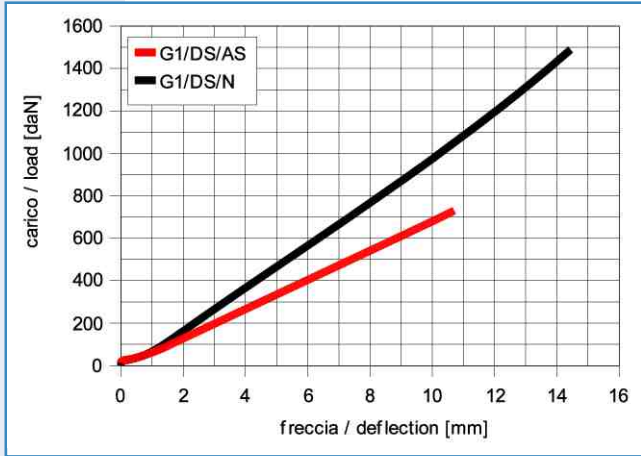
PORTATA LOAD				DIMENSIONI DIMENSIONS		
AS MESCOLA ALTA SESIBILITA' HIGH SENSITIVITY [45° Sh]		N MESCOLA NORMALE NORMAL [60° Sh]		A [mm]	B [mm]	C [mm]
TIPO Type	CARICO Load [daN]	TIPO Type	CARICO Load [daN]			
G 1/DS/AS	250 - 500	G 1/DS/N	500 - 1000	175	85	92
G 2/DS/AS	500 - 1000	G 2/DS/N	1000 - 2000	190	175	92
G 3/DS/AS	1000 - 2000	G 3/DS/N	2000 - 4000	245	175	92
G 4/DS/AS	2000 - 3000	G 4/DS/N	4000 - 6000	350	195	92
G 6/DS/AS	3000 - 4000	G 6/DS/N	6000 - 8000	395	265	96
G 8/DS/AS	4000 - 5000	G 8/DS/N	8000 - 10000	360	355	97

Dimensioni indicative

Dimensions for reference only

Diagrammi di carico

Load diagrams



Curve caratteristiche indicative

Performance characteristics for reference only

Accessori

Accessories

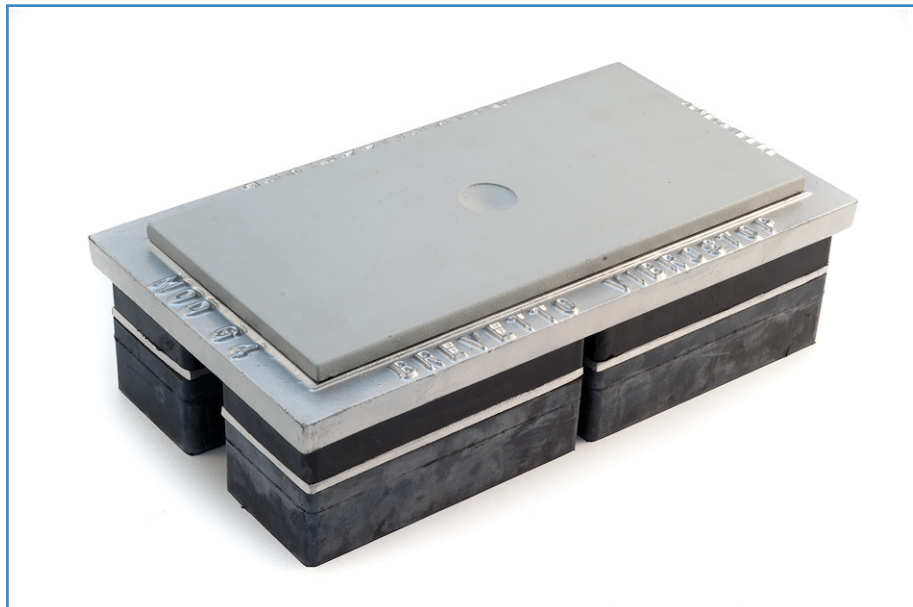
G/DS con piastra BPD
G/DS with BPD plate



- Piastra BPD appoggiata o incollata per evitare il contatto metallico tra antivibrante e macchina.

- The G/BPD is covered with Vibrostop BPD plate, which can be glued, and prevents the contact between the machinery and mountings metals.

G/DS con piastra acciaio
G/DS with steel plate



- Piastra in acciaio con nicchia emisferica per l'appoggio degli eventuali carichi concentrati

- The steel plate presents a hemispheric niche where to insert the eventual puntual loads.