

# Vibrostop AAT



## CARATTERISTICHE Features

- Sospensione elastica di impianti sospesi.
- Carichi sospesi elevati
- Funzionamento multidirezionale: ottimo comportamento nel caso di sollecitazioni assiali (trazione e compressione) e tangenziali.
- Elastomero protetto: elevatissima durata nel tempo.
- Elevato grado di sicurezza: l'eventuale distruzione degli elastomeri non comporta il distacco delle apparecchiature (es. incendio).

- *Elastic suspension of machines.*
- *Heavy suspended loads*
- *Reacts to vibrations in all directions (tension, compression, shear)*
- *Sheltered elastomer: long lasting.*
- *Big safety: the hypothetical destruction of the rubber parts does not lead to the detachment of the appliances (ex. fire).*

## MATERIALI Materials

- Componenti in gomma: elastomero Vibrostop.
- Componenti in metallo: lega di alluminio.

- *Rubber components: Vibrostop elastomer.*
- *Metal components: aluminium alloy.*

## APPLICAZIONI Applications

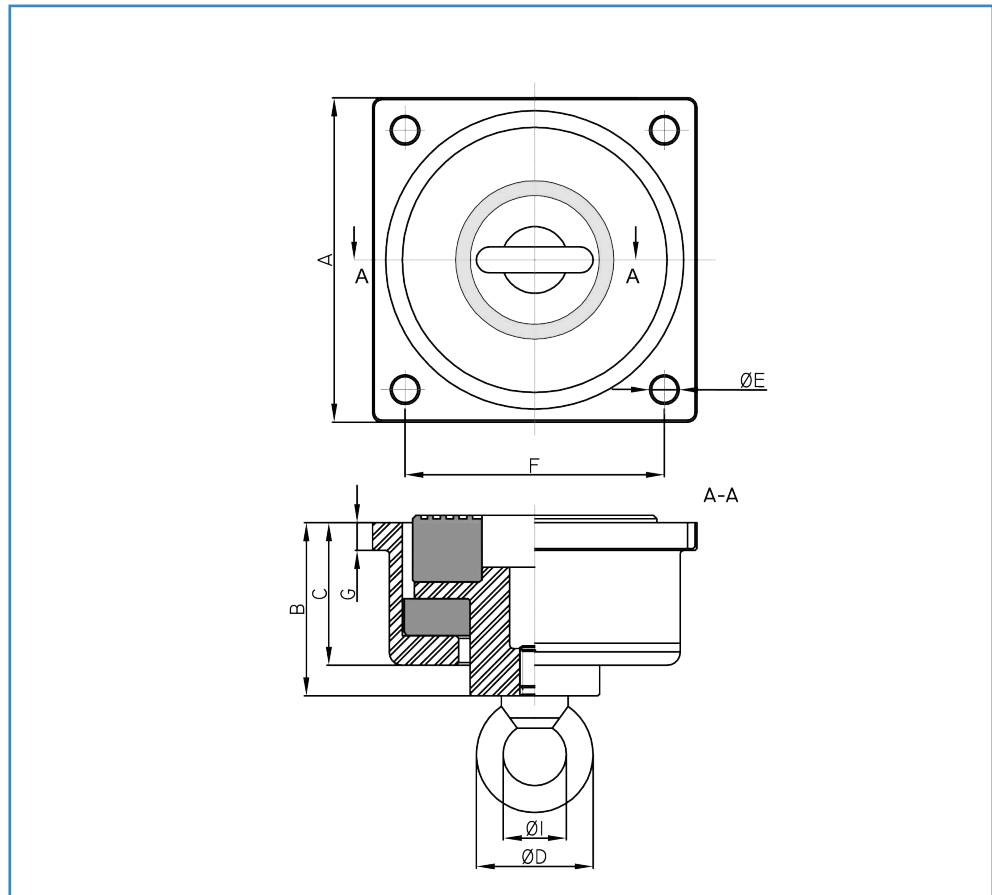
- Tubazioni - Controsoffittature - Diffusori acustici.

- *Piping - Suspended ceilings - Audio speakers.*

## INSTALLAZIONE Installation

- Fissaggio a soffitto dell'antivibrante
- Fissaggio al tirante inferiore dell'elemento da sospendere.

- *A.V. mounting fixing to the ceilings.*
- *Fixing of the suspended machinery to the lower thread.*



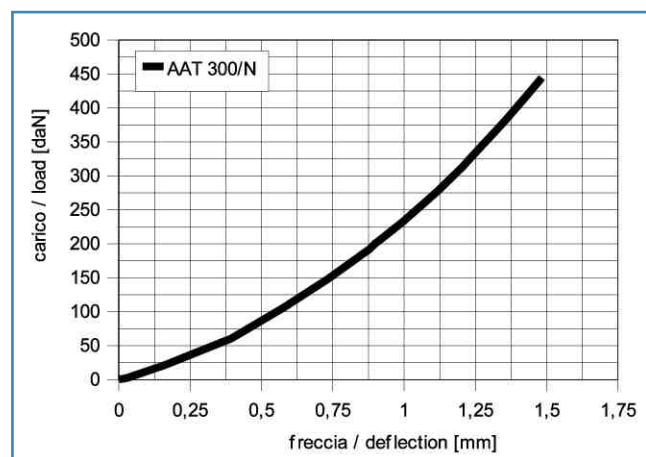
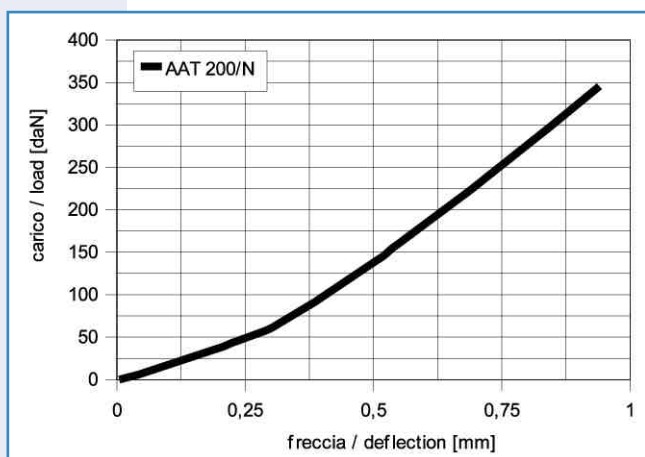
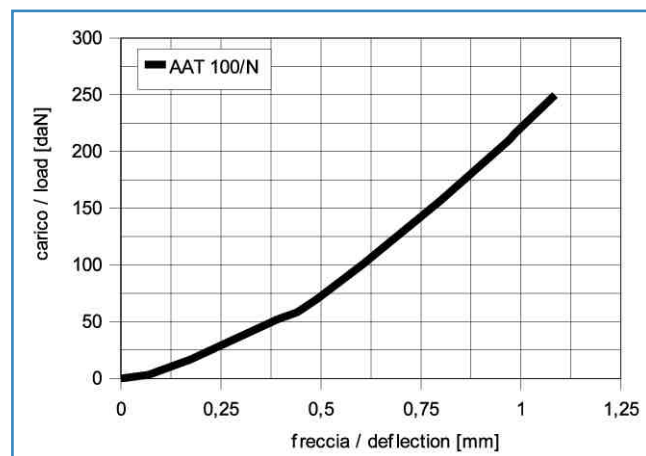
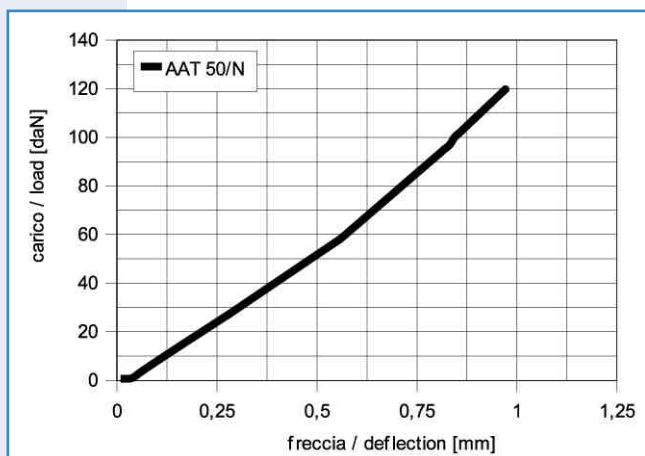
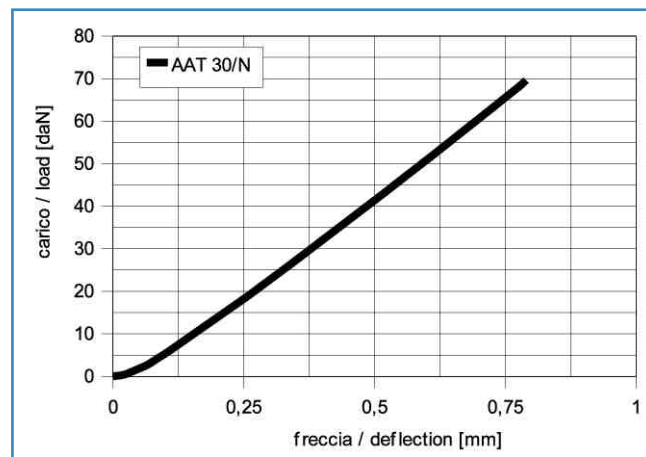
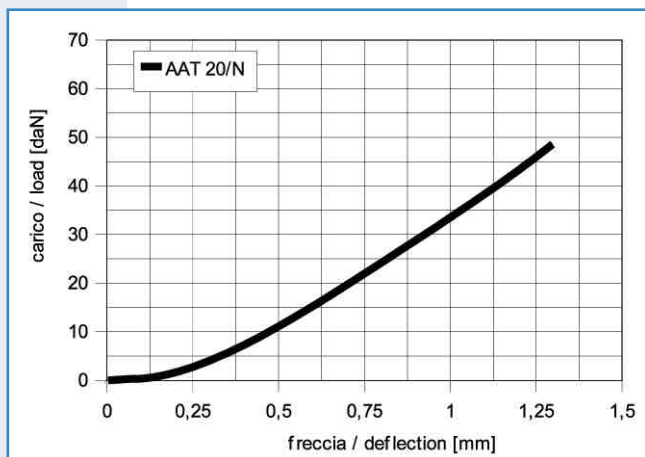
PORTATA LOAD		DIMENSIONI DIMENSIONS							
<b>N</b> MESCOLO NORMALE NORMAL [60° Sh]		A	B	C	ØD	ØE	F	G	ØI
		[mm]	[mm]	[mm]	[mm]	[mm]	[mm]	[mm]	[mm]
TIPO Type	CARICO Load [daN]								
AAT 20/N	20 - 30	46	25	20	36	3	34	3	19
AAT 30/N	30 - 50	52	36	27	37	5	42	5	19
AAT 50/N	50 - 100	65	49	35	30	6	52	8	25
AAT 100/N	100 - 200	80	54	43	25	6,5	67	8	30
AAT 200/N	200 - 300	108	73	55	40	8,5	90	10	30
AAT 300/N	300 - 400	136	81,5	65	60	10,5	110	14	34
AAT 400/N	400 - 480	155	93	74	65	12,5	125	14	34

Dimensioni indicative

Dimensions for reference only

# Diagrammi di carico

# Load diagrams

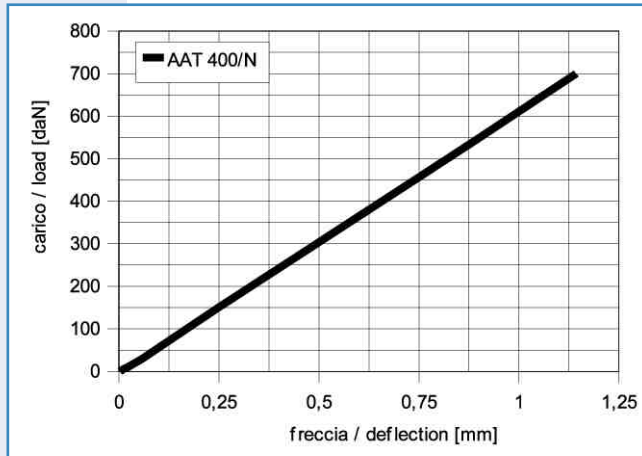


Curve caratteristiche indicative

Performance characteristics for reference only

## Diagrammi di carico

## Load diagrams



Curve caratteristiche indicative

Performance characteristics for reference only